



GOOGLE PLAY AND THE GOOGLE PLAY LOGO ARE TRADEMARKS OF GOOGLE LLC.  
THE APPLE LOGO, iPad, AND iPhone ARE TRADEMARKS OF APPLE INC., REGISTERED IN THE U.S. AND OTHER COUNTRIES AND BEYOND. APP STORE IS A SERVICE MARK OF APPLE INC.



DESIGNING  
GOOD LIFE

1520009683

		Actifry Extra / Advance	
	750 g	3/4	26-28
	1000 g	1	30-34
	1200 g	1	36-40
	750 g	1	26-28
	1000 g	1	30-34
	750 g	—	13-15
	750 g	—	13-15
	4 to 6	—	20-25
	4	—	17-22
	6	—	20-25
	750 g	1	16-18
	300 g	—	11-13
	500 g	—	16-19

		Actifry Extra / Advance	
	300 g	—	11-13
	450 g	—	16-19
	750 g	x1 +	25-30
	650 g	x1 +	18-22
	650 g	1	10-15
	650 g	x1 +	13-16
	500 g	1	12-16
	5	x1 +  x1	5-6
	Up to 1 kg	x2	10-12
	3	x1	10-12
	1	x2	10-15



DESIGNING  
GOOD LIFE

ActiFry®

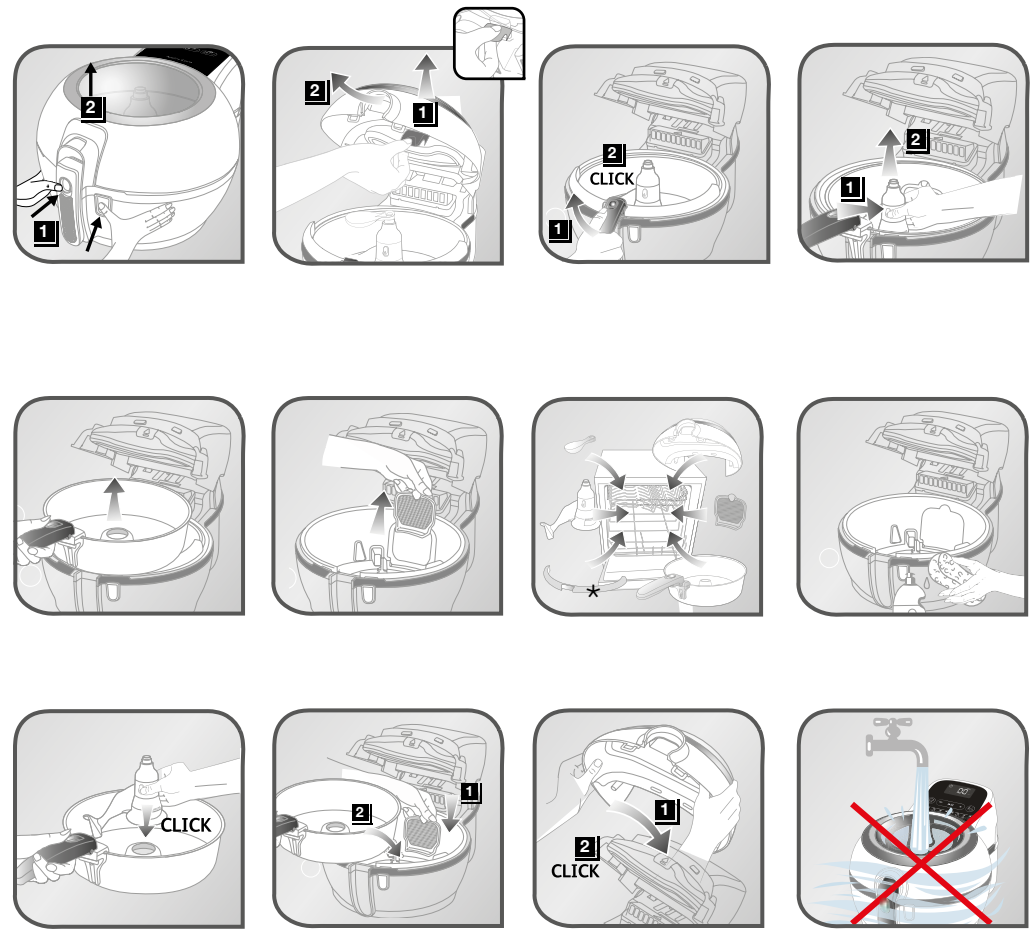
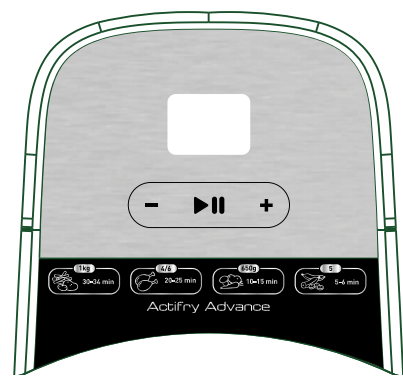


ActiFry® Extra  
ActiFry® Advance

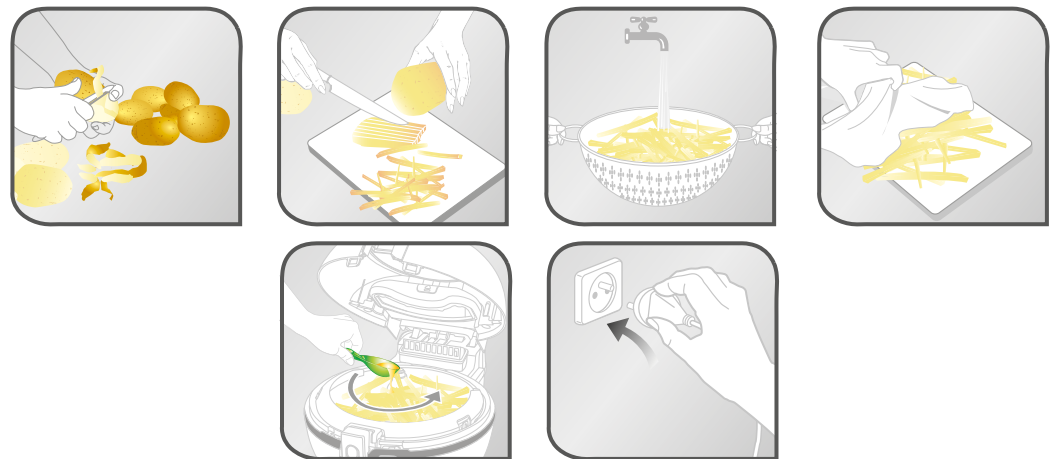


\* Selon modèle - Depending on model - Je nach Modell  
 Afhankelijk van het model - A seconda del modello  
 Según modelo - Dependendo do modelo / consoante os modelos - ανάλογα με το μοντέλο - Modele baġri olarak - Afhængig af model - Avhengig av modell  
 Beroende på modell - Mallista riippuen - Modelltöl fúgg en - У зависимости од модела - Ovisno o modelu  
 В зависимости от модела - Odvisno od modela W zależności od modelu - V závislosti na modelu  
 V závislosti na modeli - Ovisno o modelu - Зависимости от модели - Залежно від моделі - În funcție de model  
 نموذج علی استعمال

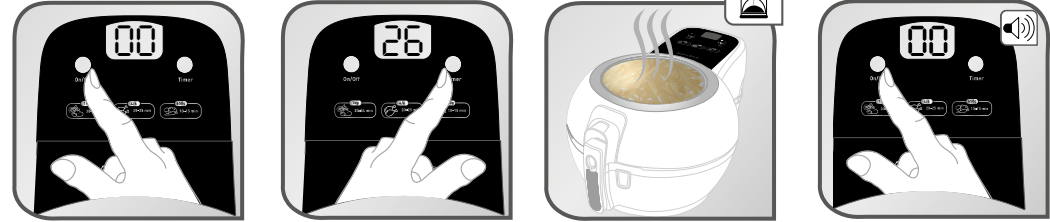
ActiFry® Advance



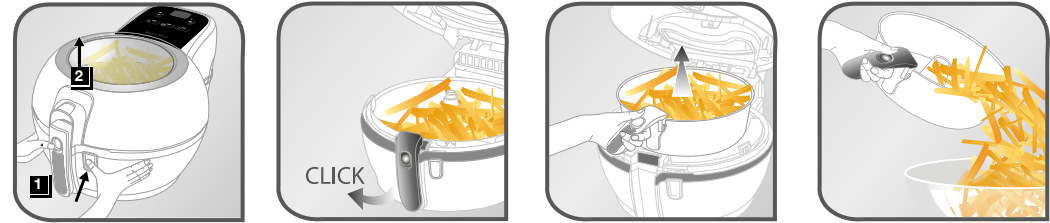
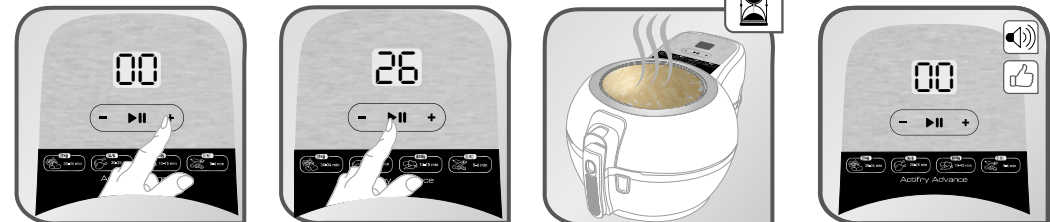
4 | 1 KG | X1 | Salt & Pepper  
 6 | 1,2 KG | X1 | Salt & Pepper



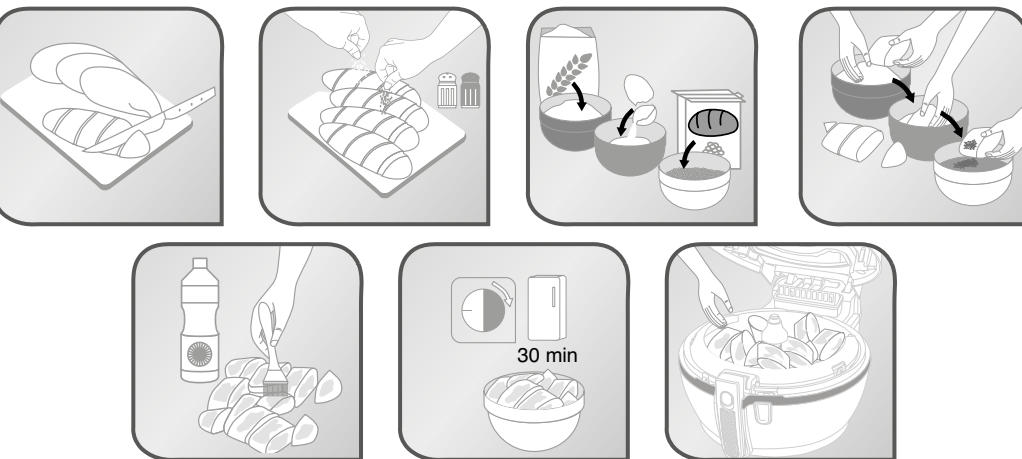
ActiFry® Extra



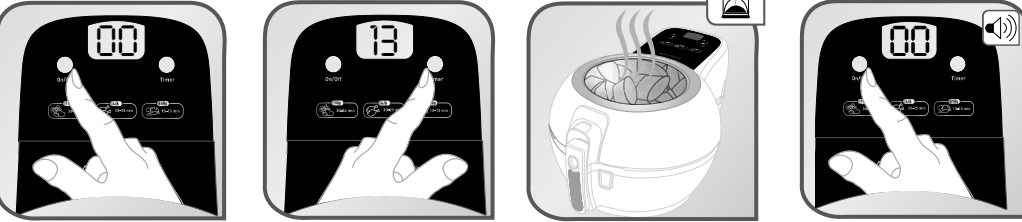
ActiFry® Advance



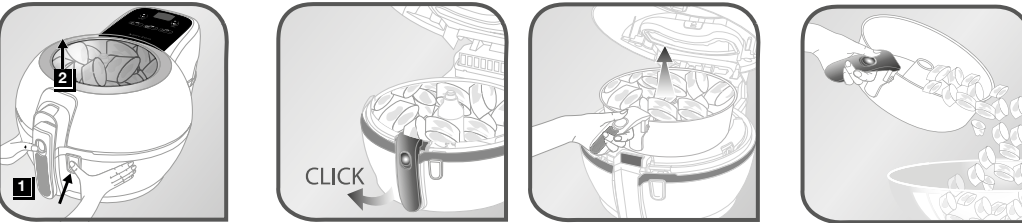
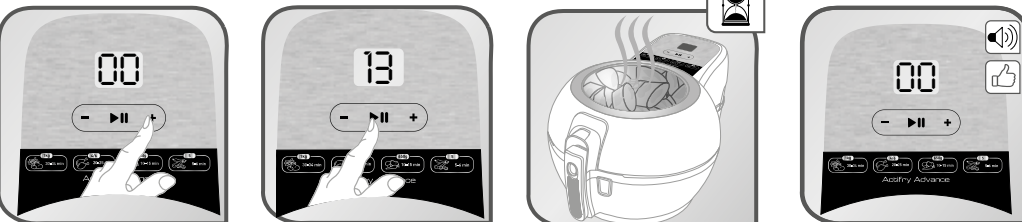
x4 | 250 g | x4 | x1 | x2 | Salt & Pepper



ActiFry® Extra



ActiFry® Advance



ActiFry® Extra

